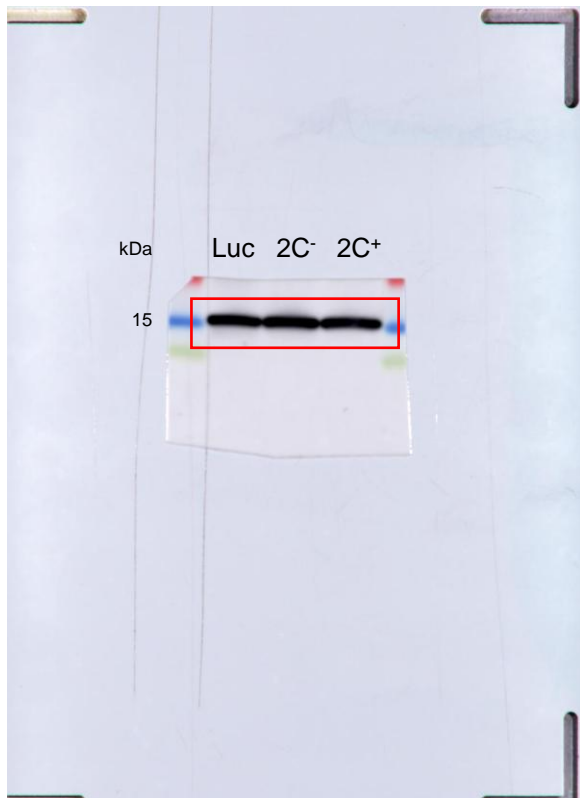
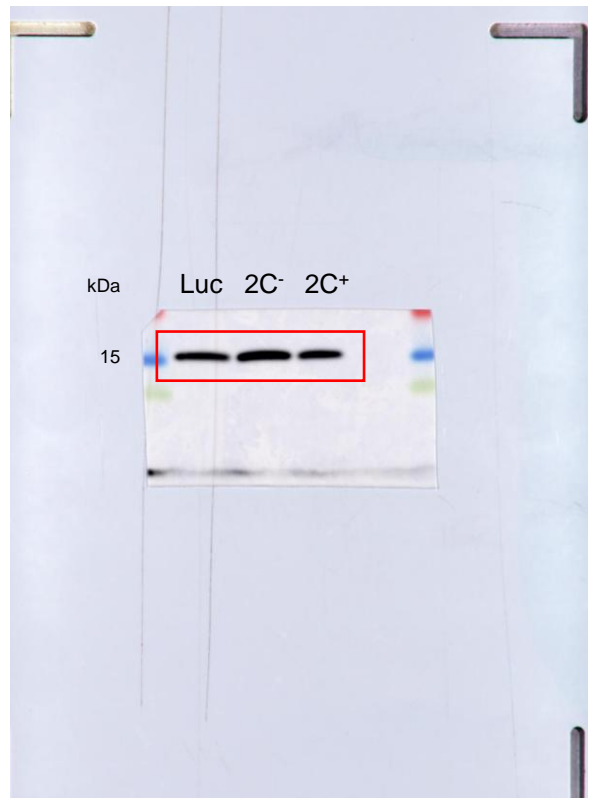


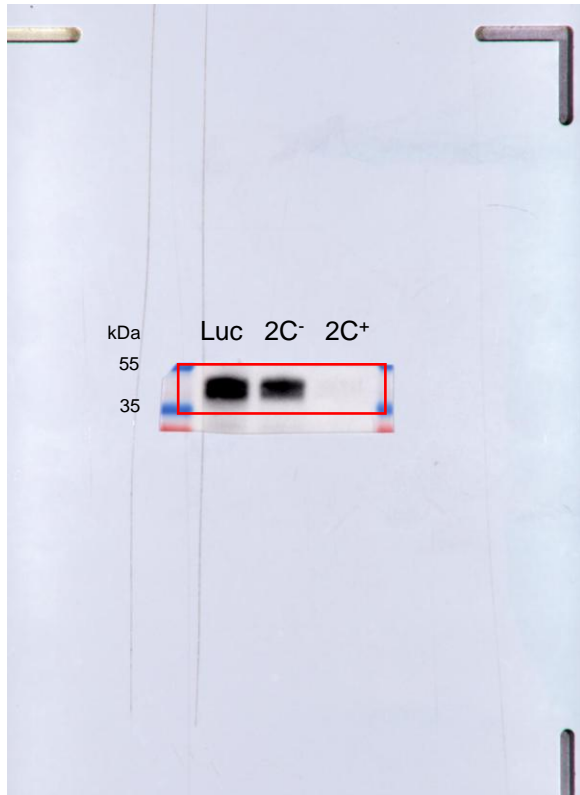
Anti-Total H3



Anti-H3K9me3



Anti-OCT4



Anti-SMARCAD1

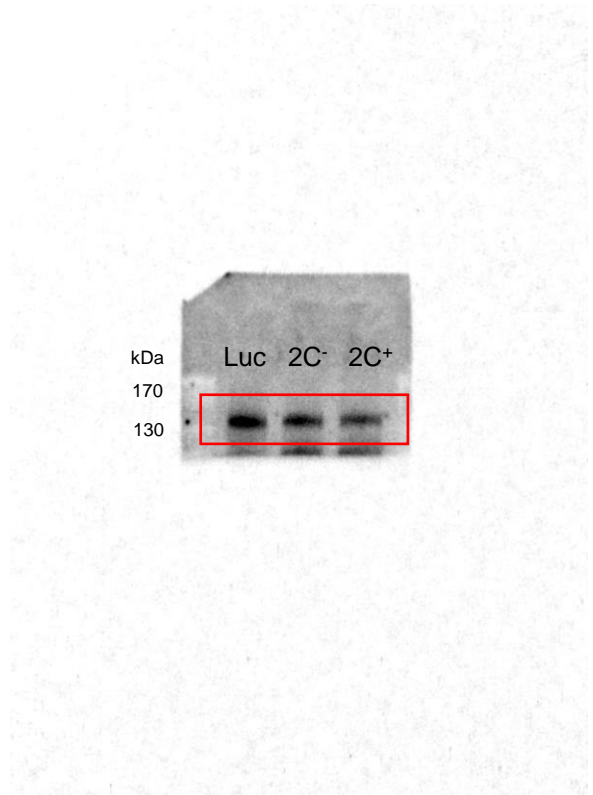


Figure 3-figure supplement 1, Source Data 2. Original membranes corresponding to Figure 3-figure supplement 1D. Representative Western Blots for luciferase (Luc), 2C⁻ and 2C⁺ cells. SMARCAD1, OCT4, H3K9me3 and total histone H3 blots are shown.